



**Austin Light Rail Phase 1 is underway. This momentous transportation investment will offer an all-new transit experience, running reliably every 5 to 10 minutes to connect people to major job centers, education hubs, and iconic Austin destinations.**

## Key progress highlights

### Continuing the design

Recommendations to:

- Add a new downtown station near Wooldridge Square.
- Extend the bridge over Lady Bird Lake and elevate the Waterfront Station.
- Refine station locations on East Riverside.
- Advance a Greenway concept along East Riverside, featuring a continuous bike/pedestrian corridor and creating tree canopy and shade.

### Hitting major milestones in the federal funding process

Including:

Release of the Draft Environmental Impact Statement (DEIS).  
The DEIS is a critical step towards federal grant funding.

### Developing the contracting and delivery approach

Including:

Onboarding the Delivery Partner.



### East Riverside

A new shaded walk and bike path along the line on East Riverside, designed to improve walkability.

## Benefits of Light Rail

### New Options to Get Places



The line will integrate with cars, buses, trains and other modes — giving people more choices when navigating between the core and the larger metro area.

### Easy, Reliable & Frequent

Light rail will have its own dedicated railway, intuitive directions, and run every 5-10 minutes — making it highly dependable and easy to use.



### Reduced Travel Times



The line will allow riders to zip through the heart of Austin without having to sit in traffic — significantly reducing travel times to key destinations.

### Nature-forward Design



Shade trees, Texas plants, and new walk and bike paths will be integrated throughout the design of the line, creating more people-friendly spaces.

### An Engine for Jobs

Light rail will create 10,000 jobs as a key part of city mobility improvements. It will also create access to 200K+ jobs when operational.



### Keeps Austin Livable

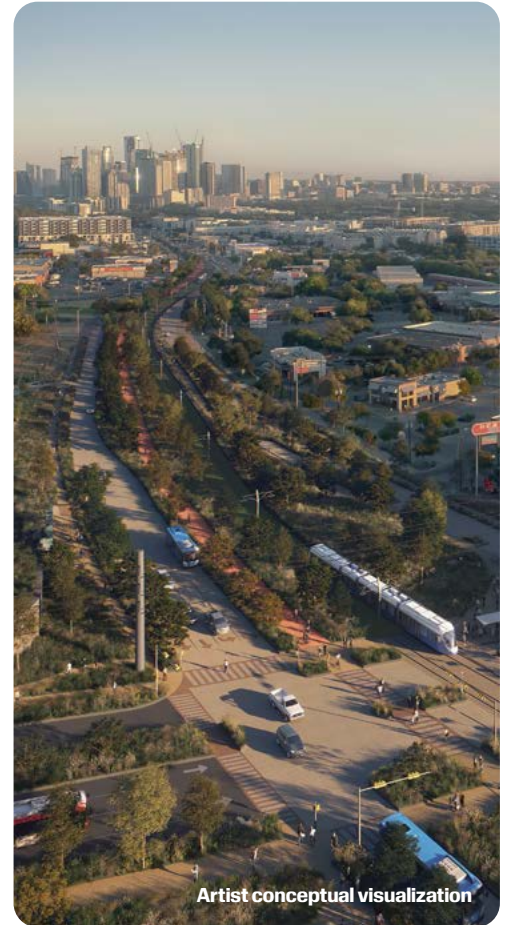


The line will help keep our city accessible for working people by connecting to affordable housing and reducing commuting costs.

# What is Light Rail?

Light rail is an expandable electric train system designed for metropolitan areas, serving as an integral part of the transit network by connecting people to essential destinations where they live, work and play.

## Austin Light Rail Phase 1 and Priority Extensions



### Light Rail on East Riverside

Aerial view near Pleasant Valley station, showing a new shaded walk and bike path and how the line extends from the city center to East Riverside.

## Facts

**15 STATIONS**  
connecting points north, south,  
and east of downtown Austin

**9.8 MILES**  
of light rail  
transit

**~ 28,000**  
average daily  
weekday trips

Access to:  
**136,000** current jobs  
**200,000+** future jobs

## What is the National Environmental Policy Act (NEPA)?

### About

Enacted into law in 1970, NEPA is a federally mandated public planning process for projects involving federal funds or federal involvement.

### Requirement

NEPA requires federal agencies to incorporate environmental considerations into their planning and decision making through a systematic and interdisciplinary approach.

Compliance with NEPA is required for Austin Light Rail because we are pursuing federal grant funding from the Federal Transit Administration (FTA).



The entire DEIS is available for review and comment at [atptx.org](http://atptx.org).

## Draft Environmental Impact Statement (DEIS)

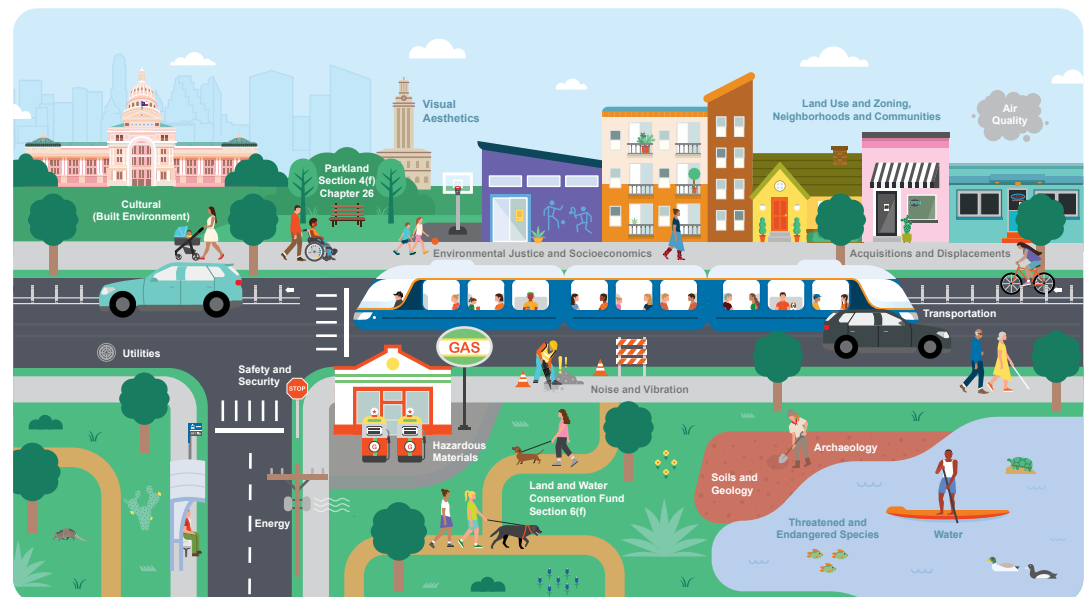
The DEIS is required by NEPA, and evaluates the potential effects of constructing and operating light rail on Austin's natural, human, and social environment.

### Benefits

Light rail will introduce a new, reliable, and frequent transportation mode that connects people to jobs and key destinations. By attracting new riders and reducing car trips, it will enhance air quality and improve transit service for existing passengers. The construction and operation of light rail will also generate a significant number of jobs, with ATP supporting the development of a local workforce to take advantage of these new career opportunities.

### Adverse Impacts and Mitigation Plan

The DEIS identifies potential adverse impacts and outlines proposed mitigation measures to minimize these effects.



### Key Areas of Interest *(identified in previous community engagement)*

#### Property Acquisitions

The project primarily utilizes public right-of-way. Less than 3% of the land adjacent to the light rail corridor would be needed, and the majority of property impacts would be thin strips of land to expand sidewalks and streets (i.e., partial rather than full acquisitions). ATP will adhere to the Uniform Act in all cases and continue refining the design to minimize property needs. Assistance will be provided for relocations that result from acquisitions.

#### Air Quality

Annually, over 20 million fewer vehicle miles will be traveled as more people take transit. Light rail is better for the environment because it is powered by electricity. Power supplied by Austin Energy for light rail will be carbon-free by 2035.

#### Traffic

Without light rail, many traffic intersections are expected to remain congested. The introduction of light rail will alleviate traffic at some locations, while other areas may see no improvement. ATP is committed to ongoing coordination with the City of Austin to ensure the overall transportation network functions effectively, including traffic signal management.

#### Construction

Construction may cause localized impacts such as dust, noise, and traffic detours. ATP will require contractors to manage these disruptions and will provide proactive communication to keep stakeholders informed of potential impacts. ATP will implement a Business Assistance Program to support businesses along the corridor.

# Provide Feedback and Stay Involved

## Meeting Dates and Locations

### JAN 16

Lively Middle School  
201 E Mary St.

### JAN 25

Montopolis Rec Center  
1200 Montopolis Dr.

### JAN 22

Baker Center  
3908 Avenue B

### JAN 28

UT Quadrangle Room  
2308 Whitis Ave.

A public review and comment period for the DEIS will be conducted from January 10 through March 11, 2025. Comments received during this period will be addressed in the Final Environmental Impact Statement.



View the online public meeting information.

## Proposed Light Rail Timeline



Artist conceptual visualization

### The Drag

The station at UT on a typical game day with a redesigned and pedestrian-centric Guadalupe Street.