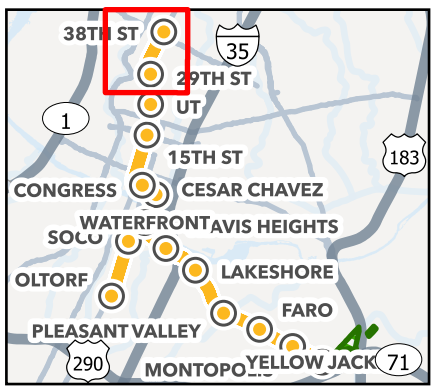
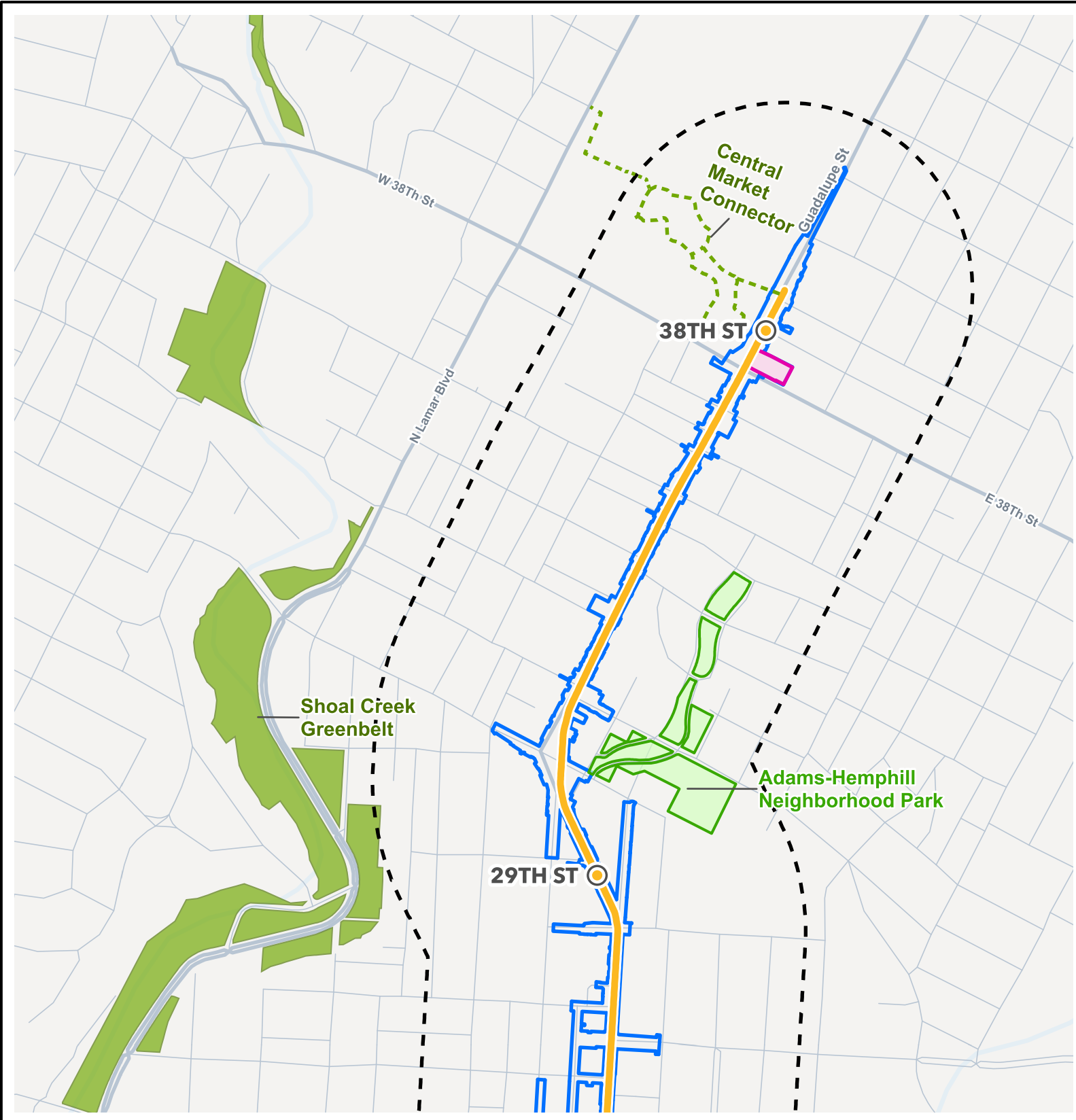


## Attachment A. Parks and Trails within ¼ mile Study Area

Number	Park / Trails	Description
1	<b>Central Market Connector</b> Size: 0.7 miles OWJ: Unknown	Central Market Connector is a proposed Tier 2 (medium priority) trail from N Lamar Blvd to Guadalupe St.
2	<b>Adams-Hemphill Neighborhood Park</b> Size: 9.3 acres OWJ: PARD	The park has various amenities including a gazebo, amphitheater, and a rentable pavilion. The park offers other recreational activities like pickleball, volleyball and basketball courts, walking trail and playgrounds.
3	<b>Shoal Creek Greenbelt and Shoal Creek Trail</b> Size: 81.9 acres Trail Length: 9.5 miles OWJ: PARD, PWD	Shoal Creek Greenbelt is used for walking, mountain biking and road biking. The trail is open year-round, has picnic spots, scenic views and is dog friendly. The trail provides north south connectivity through Central Austin.
4	<b>Old Bakery and Emporium</b> Size: 0.3 acres OWJ: PARD	The park is a public plaza adjacent to the Old Bakery and Artisan Emporium historic building in downtown Austin. A 2014 partnership of the Downtown Austin Alliance, Austin Parks Foundation and City of Austin transformed the plaza with seating, shade and plantings.
5	<b>Wooldridge Square</b> Size: 1.7 acres OWJ: PARD, THC	Wooldridge Square has landscaped spaces with grass and trees, a walking path, picnic area and a gazebo. The park hosts various cultural events including live music, performances and festivals and is listed in the NRHP.
6	<b>Republic Square</b> Size: 1.8 acres OWJ: PARD	Republic Square includes a central lawn used for activities like fitness classes, movies and festivals. The lawn is surrounded by a café, public restrooms, shaded seating spaces and walking paths. A weekly farmer's market activates the park. The park has connections to the city's Rapid Bus system.
7	<b>Shoal Beach at Town Lake Metro Park</b> Size: 13.5 acres OWJ: PARD	The park along Lady Bird Lake offers recreational activities like swimming, fishing, kayaking, biking and nature trails. Amenities like courts for tennis, basketball and volleyball are available along with playground, restrooms, changing rooms and picnic areas.
8	<b>Roberta Crenshaw Overlook at Shoal Beach at Town Lake Metro Park</b> Size: 1.6 acres OWJ: PARD	The park includes paved trails and is used for hiking, biking, running and is dog friendly. The park offers scenic views of Downtown Austin.
9	<b>Waller Creek Greenbelt</b> Size: 4.3 acres OWJ: PARD	The trail is popular for hiking, walking and running. The greenbelt runs from Waterloo Park to Ladybird Lake and is home to swallows, bats and turtles among others.
10	<b>Brush Square</b> Size: 1.8 acres OWJ: PARD	Brush Square hosts the O. Henry Museum, Susanna Dickinson Museum and a fire station. The square is one of the downtown squares envisioned in Edwin Waller's 1839 plan for Austin.
11	<b>Lance Armstrong Bikeway</b> Size: 0.8 miles OWJ: PWD	The Lance Armstrong Bikeway is an asphalt and concrete bicycle path and bike lane. The bikeway is largely shaded passing restaurants, clubs, offices and restaurants in downtown Austin.

Number	Park / Trails	Description
12	<b>Sir Swante Palm Neighborhood Park</b> Size: 3.2 acres OWJ: PARD	Sir Swante Palm Neighborhood Park provides playscapes and walking paths. PARD is working in partnership with the Waterloo Greenway Conservancy (WGC) to restore Sir Swante Palm Neighborhood Park.
13	<b>Auditorium Shores at Town Lake Metro Park</b> Size: 48.6 acres OWJ: PARD	The park includes open space, parking and the Long Center for the Performing Arts. The park is used for recreation and has event and landscaped spaces.
14	<b>Margaret Hoffman Oak Park</b> Size: 0.2 acres OWJ: PARD	The triangular park is a traffic island at the intersection of West Caesar Chavez Street and South 1 <sup>st</sup> Street. Oak trees provide shade at the park.
15	<b>Waller Beach at Town Lake Metro Park and Ann and Roy Butler Hike and Bike Trail</b> Park Size: 28.8 acres Trail Length: 14.1 miles OWJs: PARD, TPWD, THC	The Ann and Roy Butler Hike and Bike trail is used recreationally and as an alternative transportation route. The trail provides a continuous loop trail around Lady Bird Lake allowing users to cross the lake to reach their destination. The park contains amenities like the Waller Creek Boathouse, and the Ann and Roy Butler trail. The park is well used by joggers, kayakers, cyclists and wildlife watchers. The trail has a concrete boardwalk along the southeast segment.
16	<b>Lady Bird Lake Bridge</b> Size: 0.4 miles OWJ: PWD	The trail is a proposed Tier 2 (medium priority) trail connecting N IH 35SB Bridge from Festival Beach to Norwood Tract.
17	<b>Festival Beach</b> Size: 72.9 acres OWJ: PARD	Festival Beach is used for biking, boating, swimming, fishing, hiking, walking, picnicking, field sports, baseball, basketball and wildlife watching. The park has amenities like a boat ramp, picnic tables and trails.
18	<b>Norwood Tract at Town Lake Metro Park</b> Size: 9.5 acres OWJ: PARD	The park has scenic views of the Downtown Austin skyline and access to trails and an off-leash area for dogs.
19	<b>Academy Dr to IH 35 SB Lady Bird Bridge West Sidewalk</b> Size: 0.3 miles OWJ: PARD	The proposed trail is a Tier 3 (lowest priority) trail from Alta Vista Ave to Edgecliff Terrace.
20	<b>Blunn Creek Trail</b> Size: 13.7 acres OWJ: PARD	The trail is used for biking, hiking and walking. The trail has a playground and is dog friendly.
21	<b>The Circle Greenbelt</b> Size: 1.2 acres OWJ: PARD	The Circle Greenbelt is popular for wildlife watching and walking.
22	<b>Little Stacy Neighborhood Park</b> Size: 6.8 acres OWJ: PARD	Little Stacy Neighborhood Park is popular for its wading pool, playground, restrooms, pavilion and picnic tables and sports amenities. Oak trees provide shade in the park which is located along the Blunn Creek Trail.
23	<b>S IH 35 SB and Riverside Dr to Oltorf St Trail</b> Size: 1.1 miles OWJ: TxDOT	The trail is a proposed Tier 2 (medium priority) trail along I-35.

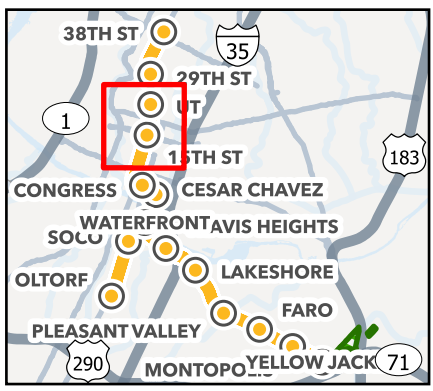
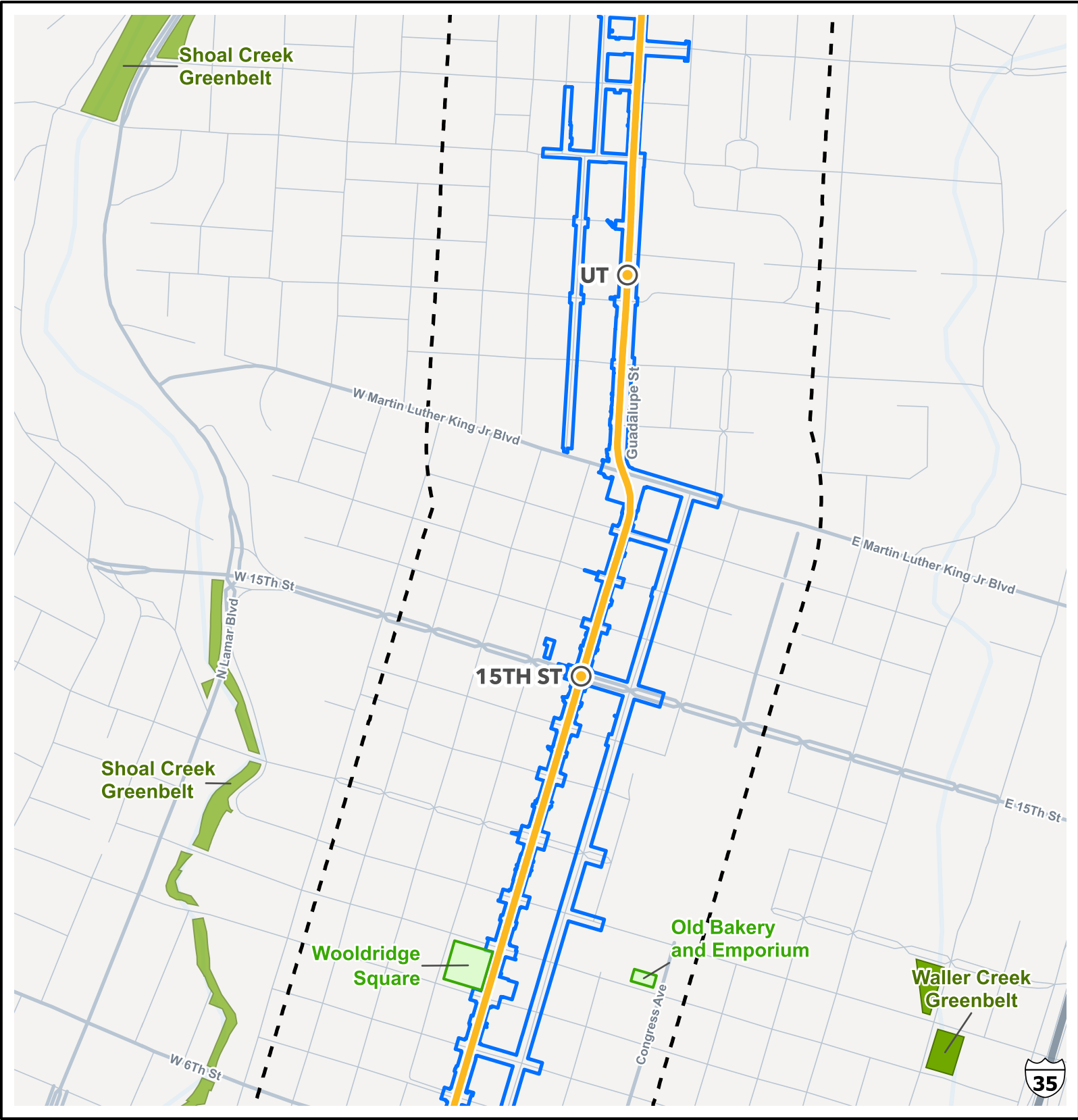
Number	Park / Trails	Description
24	<b>International Shores at Town Lake Metro Park</b> Size: 9.1 acres OWJ: PARD, APTCO Riverview LLC, 1620 East Riverside Drive LLC	International Shores at Town Lake Metro Park is along Lady Bird Lake and has amenities like trails, drinking fountains and restrooms. The park is shaded by trees and is connected by the Ann and Roy Butler Hike and Bike Trail which is used for walking and biking.
25	<b>Harpers Branch Creek Greenbelt</b> Size: 1.7 acres OWJ: PARD	The undeveloped park in the Travis Heights neighborhood is publicly accessible from its northwest quarter along Kenwood Ave.
26	<b>Country Club Creek Trail</b> Size: 3.5 miles OWJ: TPW	The trail has a planned extension to connect from East Riverside Dr to East Oltorf Street. The open sections of the trail have benches and water fountains and are used for biking, hiking and pet friendly activities. Mature live oak trees provide shade along the trail.
27	<b>Penick Pocket Park</b> Size: 2.8 acres OWJ: PARD	The park includes trails, and shade structures.
28	<b>Aura Riverside Pocket Park and Trail</b> Size: 2.1 acres OWJ: PARD	The trail includes benches and bike racks. The pocket park and trail was dedicated to the City as a part of the site development requirements by the Aura Riverside Multifamily development.
29	<b>Lawrence Street Pocket Park</b> Size: 1 acre OWJ: PARD	The pocket park has a waking trail and is dog friendly.
30	<b>Airport Commerce Pocket Park</b> Size: 0.4 acres OWJ: PARD	The park provides recreational activities including playscapes, benches, bike racks and trails.
31	<b>Montopolis Tributary Trail</b> Size: 1.6 miles OWJ: PARD	The trail from E Riverside Dr to Frontier Valley Dr is a Tier 1 (high priority) proposed trail. The trail would connect East Riverside Dr to the Montopolis Bicycle and Pedestrian Bridge at the Colorado River with several connections to community destinations.
32	<b>SH 71 Shared Use Path</b> Size: 1 mile OWJ: PWD	The trail is a proposed Tier 2 along State Highway 71 that offers a safe commuting bicycle and pedestrian path.
33	<b>Trail to the ABIA Airport</b> Size: 2.3 miles OWJ: PWD	The trail from Airport Commerce Dr to Spirit of Texas Dr is a Tier 1 (high priority) proposed trail.
34	<b>El Camino de los Tejas National Historic Trail</b> Size: 2,580 miles OWJ: National Park Service	The portion of the El Camino Real de los Tejas National Historic Trail on the OMF site is not evident or publicly accessible. The trail is not a Section 4(f) parkland resource.
35	<b>183 Tollway Shared Use Path</b> Size: 10 miles OWJ: PWD	The 183 Tollway Shared Use Path offers users a dedicated bicycle and pedestrian path. The trail connects to Williamson County's Brushy Creek Trail with a pedestrian bridge and includes a trailhead with exercise equipment. The trail has proposed extensions.
36	<b>South Austin Island</b> Size: 0.24 acres OWJ: PARD	The park includes seating for public use and a gazebo. The island park has a walking pathway and sidewalk space which is shaded by trees.



- Light Rail Station
- Light Rail Route
- Limits of Construction
- Proposed Trails
- Existing Trails
- Existing Trails
- Park
- 1/4 mile Study Area
- Park and Ride Site
- Maintenance of Way Locations
- O&M Facility



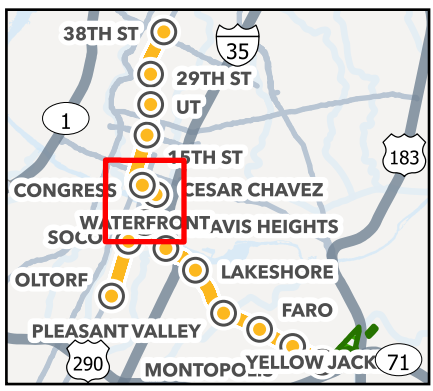
Source: Austin Transit Partnership 2024, Historic Resources of Texas Aggregator, Travis County, Texas



- Light Rail Station
- Light Rail Route
- Limits of Construction
- Proposed Trails
- Existing Trails
- Park
- 1/4 mile Study Area
- Park and Ride Site
- Maintenance of Way Locations
- O&M Facility



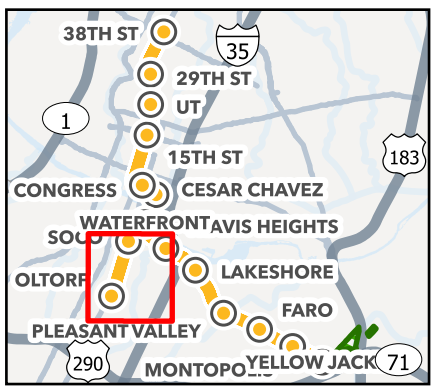
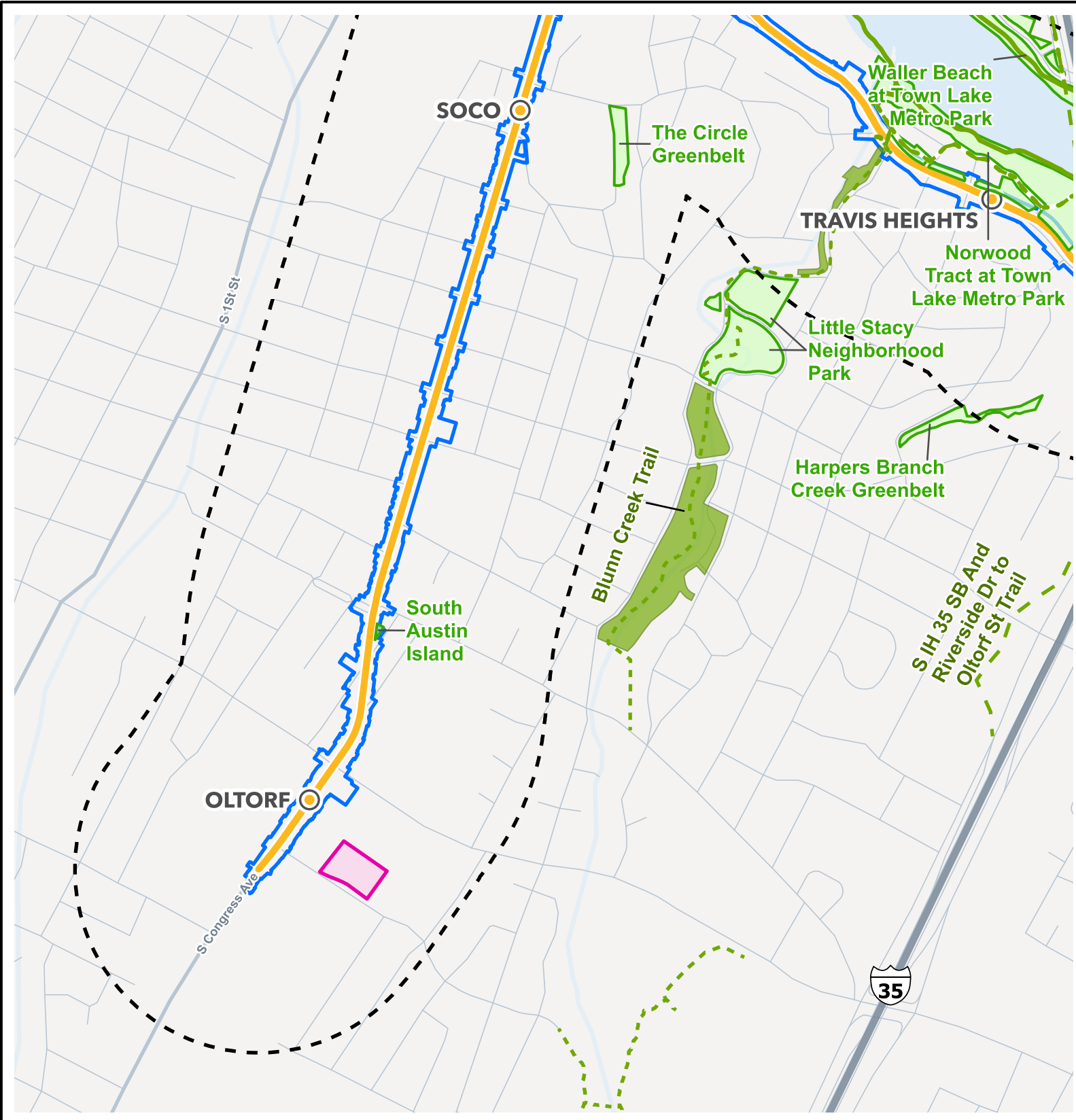
Source: Austin Transit Partnership 2024, Historic Resources of Texas Aggregator, Travis County, Texas



- Light Rail Station
- Light Rail Route
- Limits of Construction
- Proposed Trails
- Existing Trails
- Park
- 1/4 mile Study Area
- Park and Ride Site
- Maintenance of Way Locations
- O&M Facility

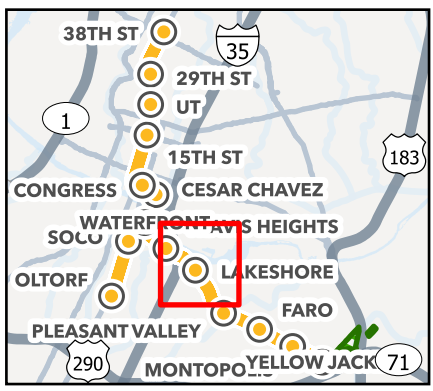
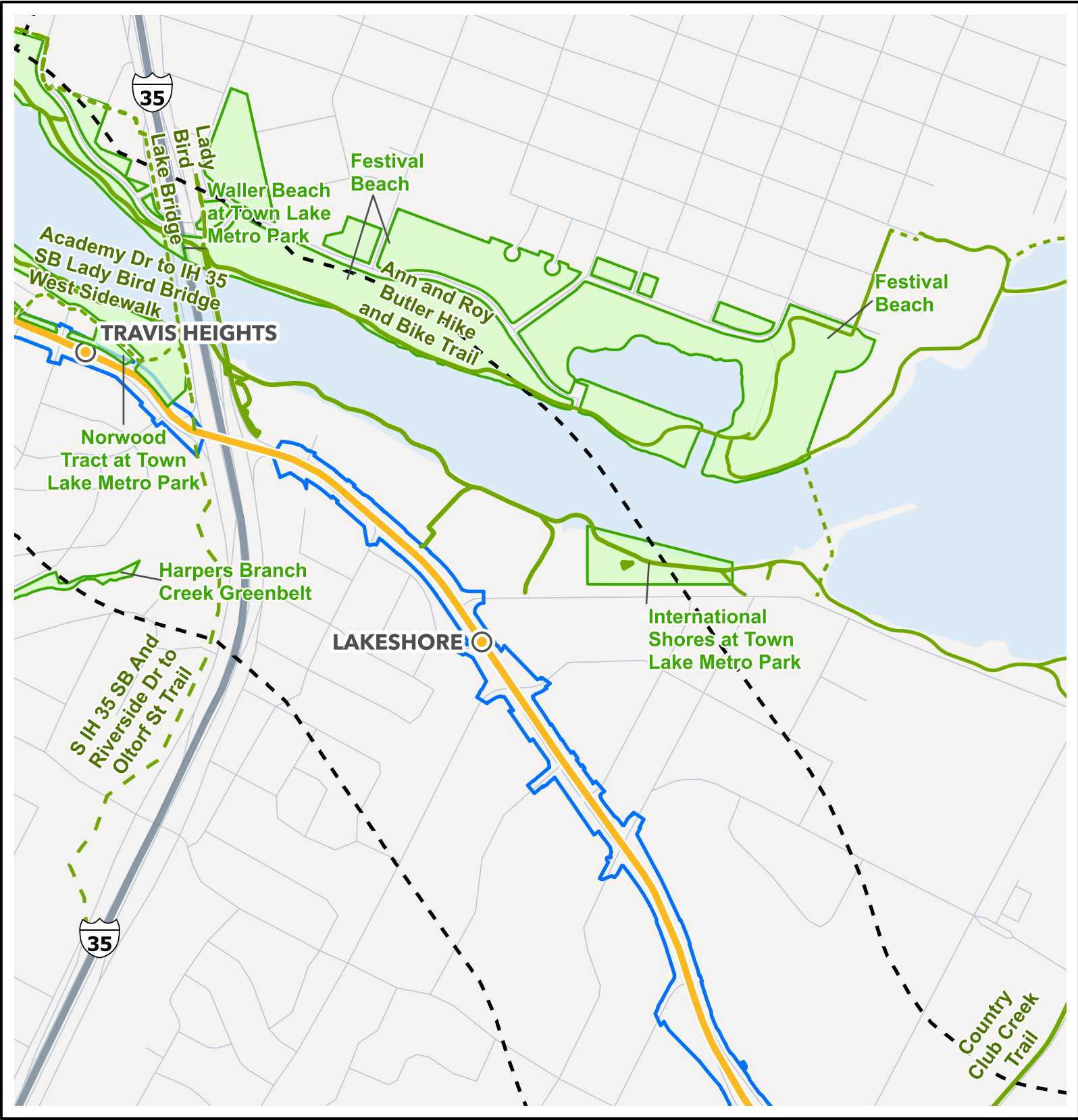


Source: Austin Transit Partnership 2024, Historic Resources of Texas Aggregator, Travis County, Texas



- Light Rail Station
- Light Rail Route
- Limits of Construction
- Proposed Trails
- Existing Trails
- Park
- 1/4 mile Study Area
- Park and Ride Site
- Maintenance of Way Locations
- O&M Facility

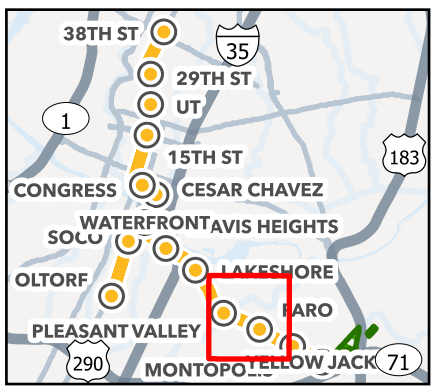
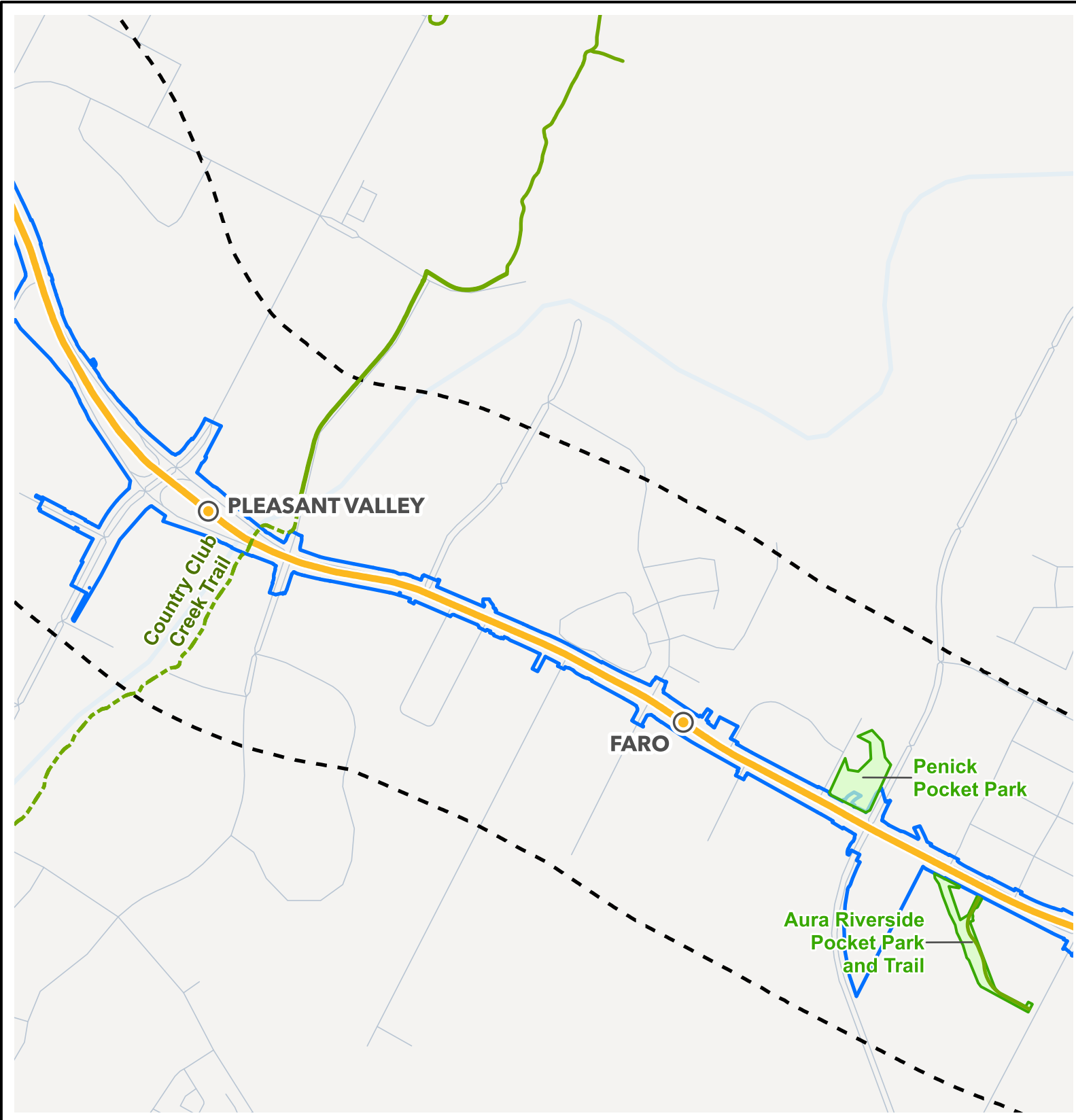




- Light Rail Station
- Light Rail Route
- Limits of Construction
- Proposed Trails
- Existing Trails
- Park
- 1/4 mile Study Area
- Park and Ride Site
- Maintenance of Way Locations
- O&M Facility

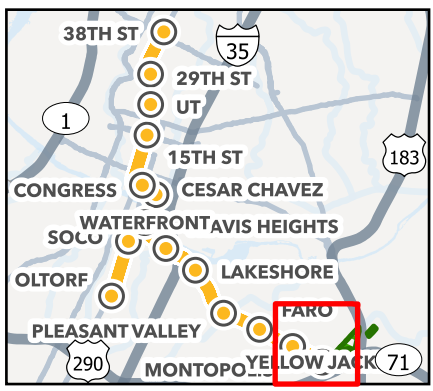
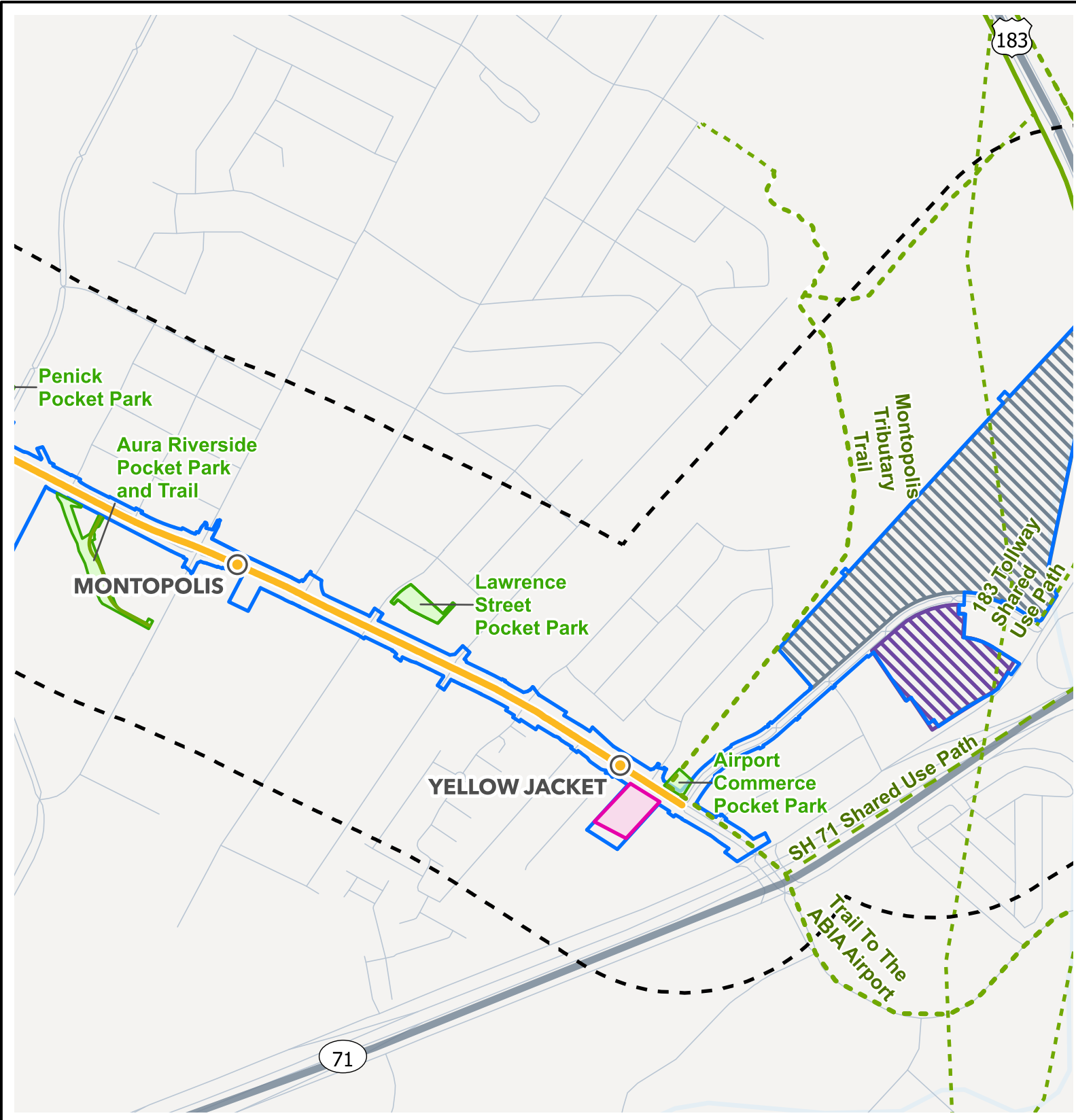






- Light Rail Station
- Light Rail Route
- Limits of Construction
- Proposed Trails
- Existing Trails
- Existing Trails
- Park
- 1/4 mile Study Area
- Park and Ride Site
- Maintenance of Way Locations
- O&M Facility



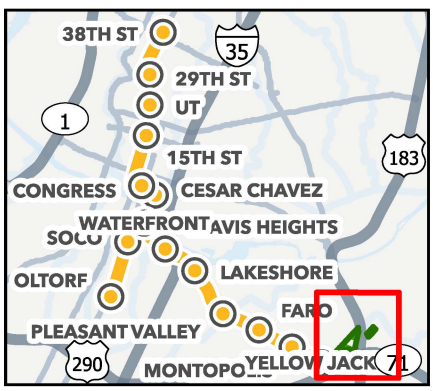
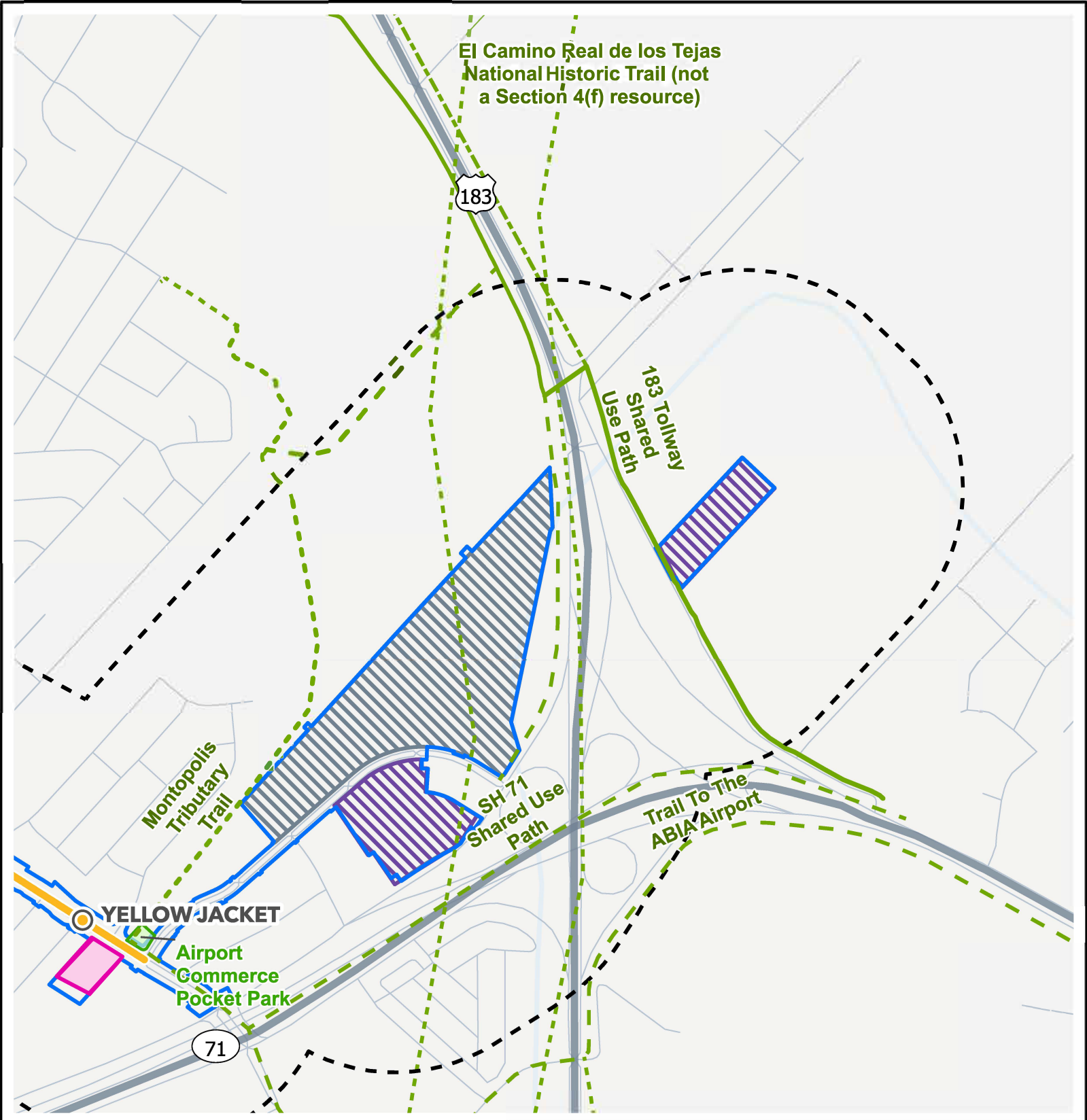


- Light Rail Station
- Light Rail Route
- Limits of Construction
- Proposed Trails
- Existing Trails
- Park
- 1/4 mile Study Area
- Park and Ride Site
- Maintenance of Way Locations
- O&M Facility



Source: Austin Transit Partnership 2024, Historic Resources of Texas Aggregator, Travis County, Texas

El Camino Real de los Tejas  
National Historic Trail (not  
a Section 4(f) resource)



- Light Rail Station
- Light Rail Route
- Limits of Construction
- Proposed Trails
- Existing Trails
- Existing Trails
- Park
- 1/4 mile Study Area
- Park and Ride Site
- Maintenance of Way Locations
- O&M Facility

